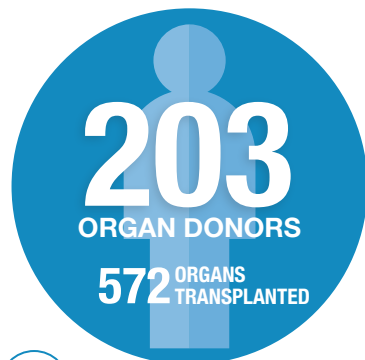


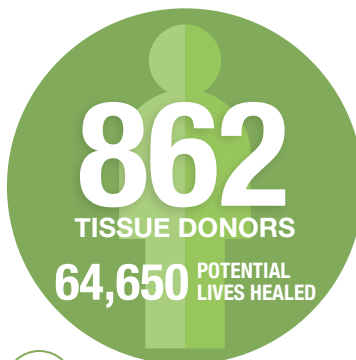


# 2021 THE YEAR IN NUMBERS

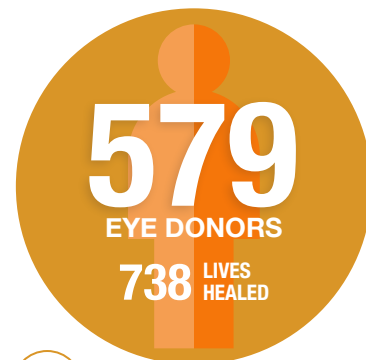
ORGAN DONORS INCREASE 10%, RECORD TISSUE AND EYE DONORS



10% Increase from 2020



34% Increase from 2020



20% Increase from 2020

## MILESTONES

# 5,000

ORGAN DONORS

In May, LifeSource honored the wishes of our 5,000<sup>th</sup> organ donor since official reporting began in 1990.



# 10,000

TISSUE DONORS

On November 4, LifeSource honored the wishes of our 10,000<sup>th</sup> tissue donor since the program began in 1999.



# 579

EYE DONORS

On Dec. 23, LifeSource exceeded our highest annual eye donors since the program began in 2016 (previous was 569).



## TIME-SAVING INNOVATION

# 10

Mile Test Flight

MissionGO, LifeSource & Mercy Hospital transported the world's first human pancreas via unmanned aircraft (drone).



Real-Time Organ Tracking

GEGO global tracking devices are now attached to organ packages and provide real-time data to LifeSource and transplant centers throughout the process.



image ©GEGO

# \$100M

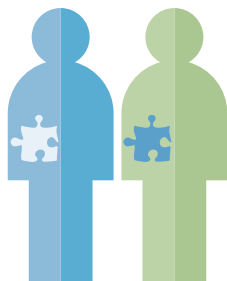
to Pursue Cryogenically Freezing of Organs

LifeSource joined the University of Minnesota and others across the country in forming a Biostasis Research Institute in pursuit of creating a human "organ bank."





## LIVING DONORS



# 89 LIVING DONORS

LifeSource preserves/packages these when the donor & recipient are at different hospitals. 35% increase from second highest year – 2018.

## LIFESOURCE TEAM EXPANSION

# 5 NEW DIRECTOR ROLES

TO SUPPORT OUR BOLD AIMS OF SAVING MORE LIVES & INCLUSION



Diversity, Equity & Inclusion • Hospital Services • Human Resources  
Information Services • Organizational Outcomes

## ADVOCACY & ENGAGEMENT

# 21

Ambassador  
Volunteers Went  
Through New  
Training Program

# 69 BLOG POSTS

Created to tell stories and answer the community's questions.

NEW FAMILIES SUPPORTED  
THROUGH OUR AFTERCARE  
PROGRAM



# 742,150+

People Reached  
During National  
Donate Life Month  
(195% increase  
over 2021).



# \$3,232

Raised for  
North Point  
Food Shelf

Through an auction of LifeSource team member skills, bid on by other team members. Skills included: Muay Thai lessons, baked goods and guided hikes.



# 56

Flag raisings were held by funeral homes, schools, hospitals, DMVs and individuals across our three states during National Donate Life Month in April.



# 5 LIFESOURCE VIRTUAL EVENTS

National Donate Life Month  
Donor Family Gathering  
Hospital Partner Workshop  
Donate Life Day  
20 Year Community Partner Reunion

REGISTERED DONORS



IN JUNE  
**2021,**

LifeSource shifted our donor designation metric from **share to rate** to align with best practices in our industry and give us a better understanding of designation in our region in real-time.

RATE:

**58%**  
2020: 59%

SHARE:

**71%**  
2020: 70%

Donor Designation Rate  
vs  
Donor Designation Share

**NEW Donor Designation Rate (DDR):** percentage of individuals who register as donors at the DMV (annual average).

**Donor Designation Share (DDS):** percentage of the adult population registered as donors.

## DONATION IS A TEAM EFFORT:

Thank you to all our partners who created space for this work despite many challenges: DMV closures, exhausted hospital staff and overwhelmed funeral homes.

# LET'S MAKE IT 0

PEOPLE WAITING FOR A LIFE-SAVING TRANSPLANT

